



**CITY OF NEW ORLEANS**

**Department of Transportation and Development**

**Fleur de Lis Dr.**

**(30<sup>th</sup> – Old Hammond Hwy)**

**Pre-Construction Community Meeting**

January 25, 2017

# Agenda

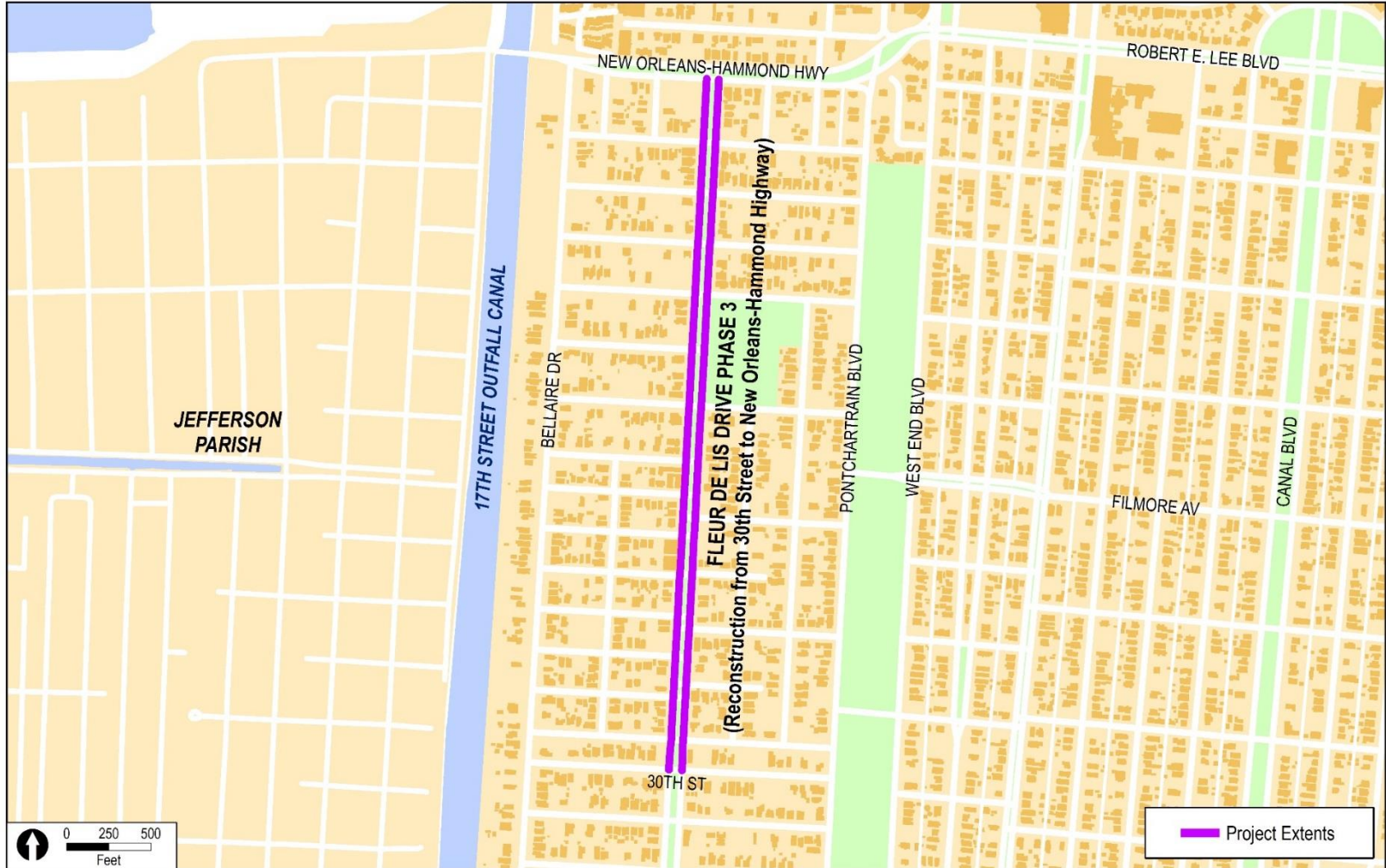
- **Introductions**
- **Fleur de Lis Dr. Reconstruction Project**  
(30<sup>th</sup> to Old Hammond Hwy)
- **What to expect during construction**
- **Discussion**



# Project Area



**FLEUR DE LIS DRIVE PHASE 3 PROJECT EXTENTS**  
City of New Orleans Department of Public Works: August 2016



# Fleur de Lis Dr.

## (30<sup>th</sup> – Old Hammond Hwy)

- **Design:** GEC, Inc.
- **Construction Management:** ECM Consultants, LLC
- **Construction:** Command Construction Industries, LLC.
- Approximately **\$12M** project
- **Timeline:** Mobilization to the staging area to begin in February and last through summer of 2018





# Fleur de Lis Dr.

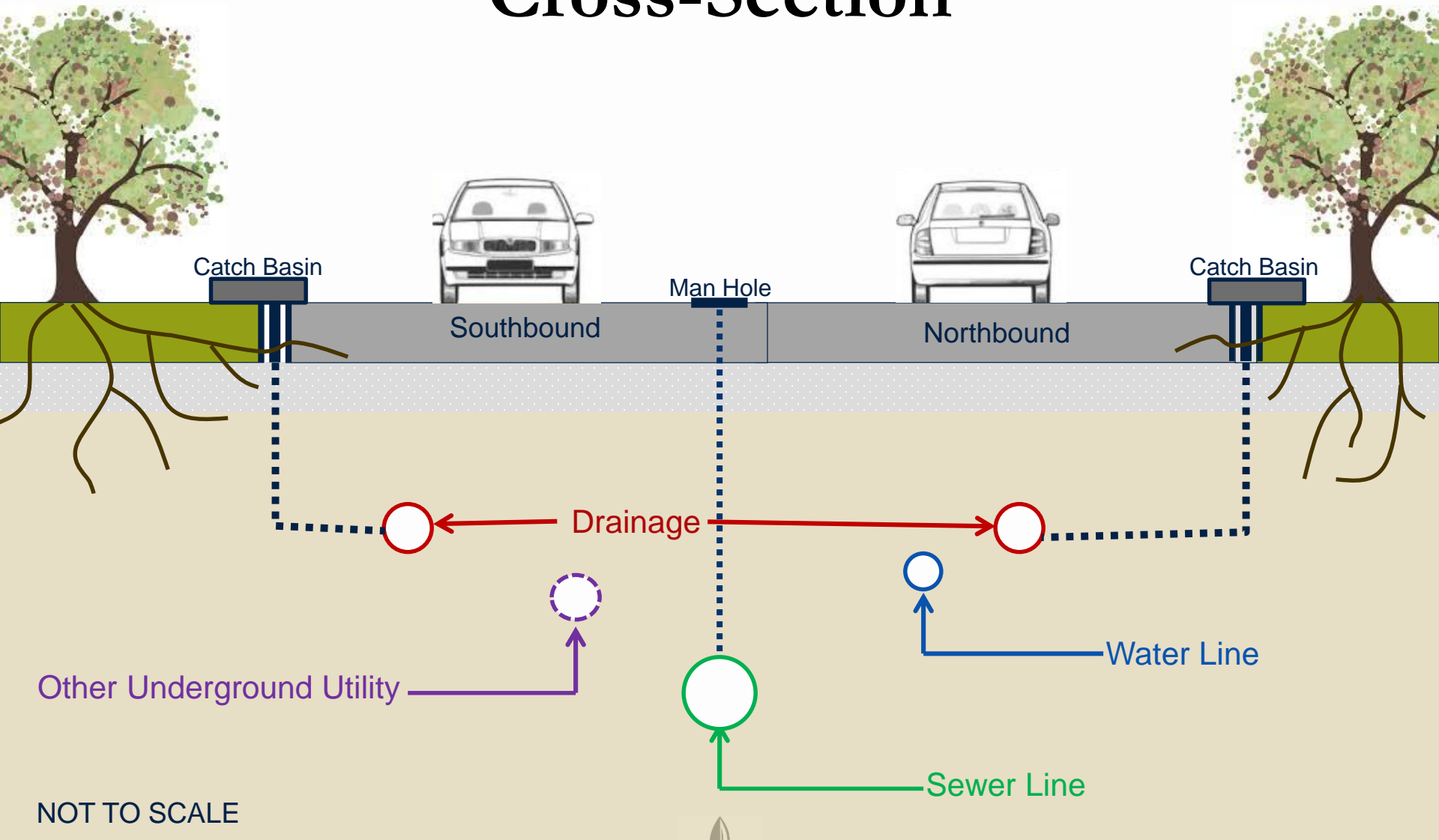
(30<sup>th</sup> – Old Hammond Hwy)



Existing conditions of Fleur De Lis Dr. at Tacoma yields a Pavement Condition Index of Failure



# Typical Street Right of Way Cross-Section



# Fleur de Lis Dr.

## (30<sup>th</sup> – Old Hammond Hwy)

### Scope of work includes:

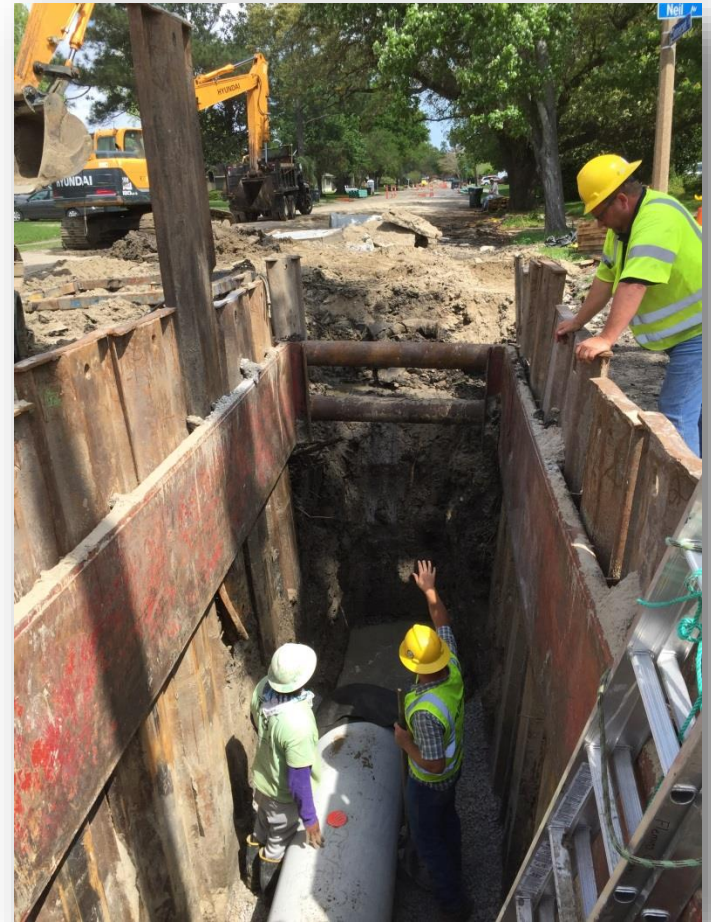
- Installing new subsurface sewer, water and drainage lines
- Manhole adjustments
- Removing existing roadway and replacing it with a new reinforced concrete roadway including new concrete curb and gutter bottom.
- Removing and replacing sidewalks and driveways aprons
- Installing Americans with Disabilities Act-compliant curb ramps at intersections
- Roadway striping





# Subsurface Utility Replacements

- Replace existing sewer, water and drainage lines



A trench will be dug to replace the underground infrastructure.





# Subsurface Utility Replacements

- Minimal water service disruptions
- Notifications will be sent to residents 48-hours prior to any work that may cause water service disruptions



# Drainage / New Catch Basins

- New drainage lines will help evacuate rain water from the roadway more rapidly.





# Sidewalks and Driveway Aprons



- Existing sidewalks will be replaced with new four foot sidewalks
- New sidewalks and ramps will meet ADA compliance regulations



# Americans with Disabilities Act- Compliant Curb Ramps



Americans with Disabilities Act (ADA)-compliant curb ramps at sidewalk corners ensure accessibility for people who are visually or physically impaired, using wheelchairs or strollers.





# Fleur de Lis Dr.

(30<sup>th</sup> – Old Hammond Hwy)



Existing conditions of Fleur De Lis Dr. at Tacoma yields a Pavement Condition Index of Failure



# **\*Future Conditions**



**\* This section of Fleur de Lis Dr. will look similar to the other phases at the conclusion of construction.**

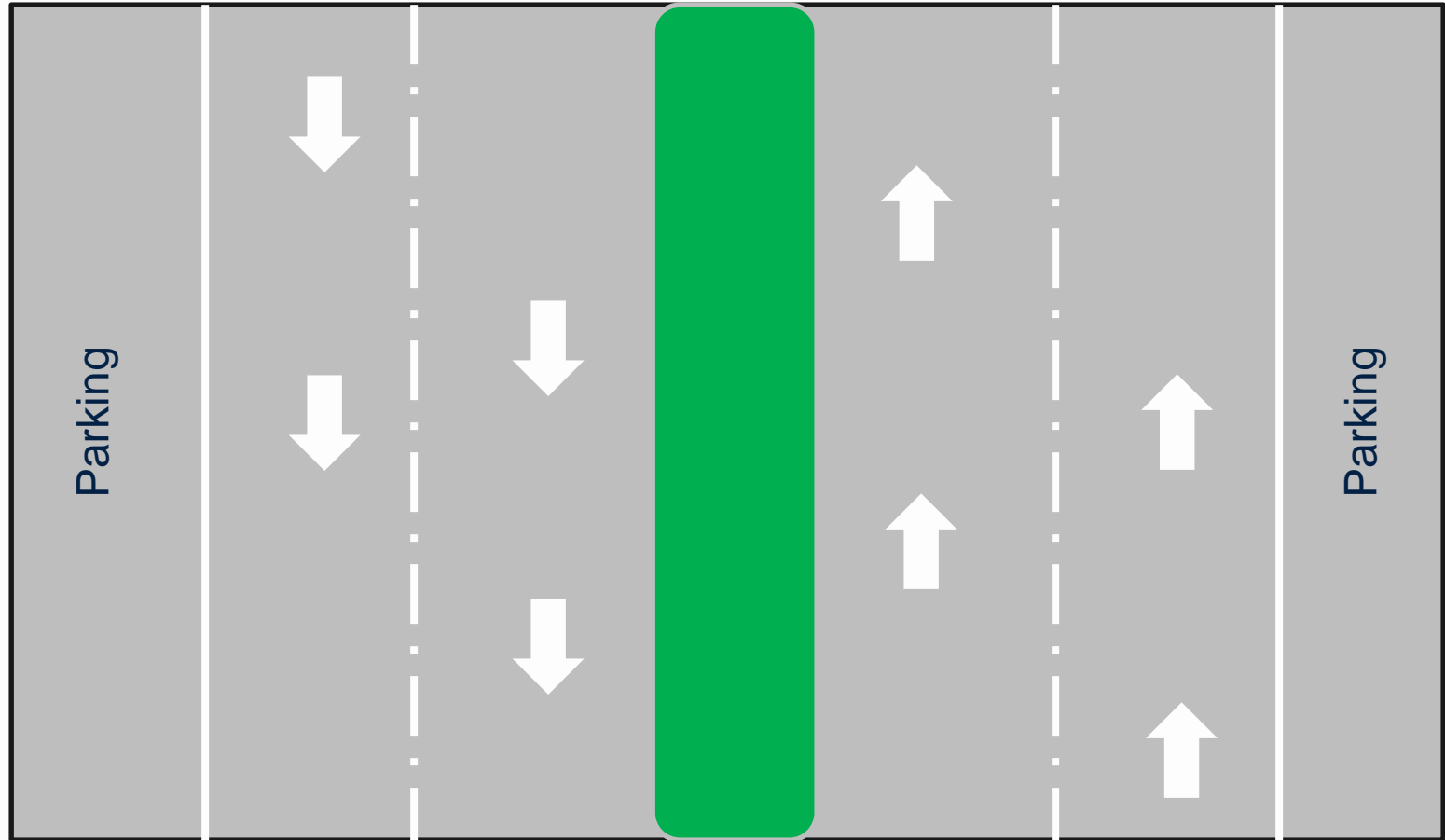


# What to Expect During Construction Traffic

- Two-way traffic will be shifted to the south bound side of Fleur de Lis Dr. while crews work on the north bound side of the roadway.
- One travel lane will be maintained, in each direction, throughout construction.
- Limited parking will be available near the trench site.
- Crews will attempt to allow local access to driveways in the evening.
- Two crews will be on-site.



# What to Expect During Construction

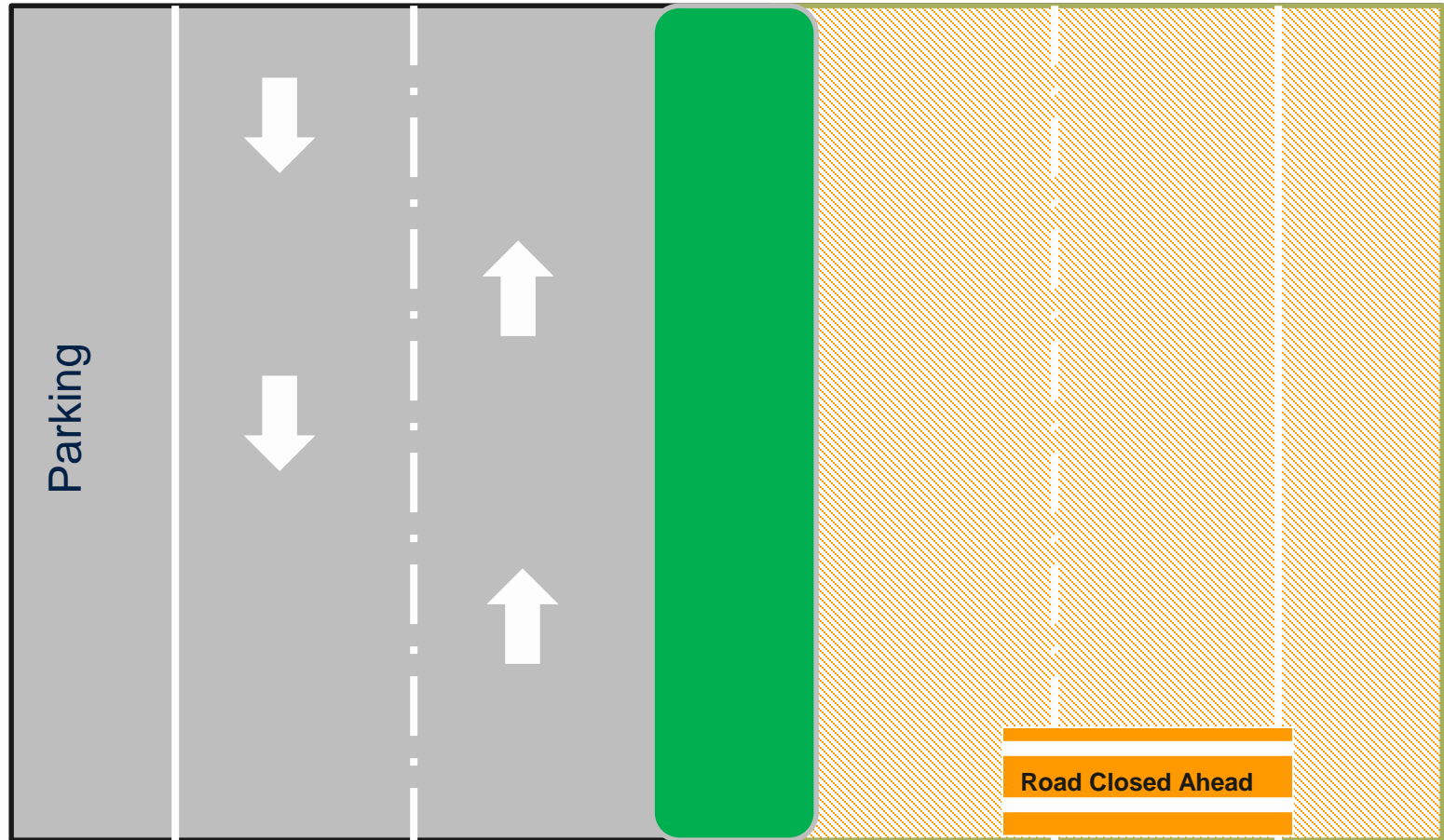


Current traffic flow (not to scale)





# What to Expect During Construction



Temporary traffic flow (not to scale)



# What to Expect During Construction

## Temporary construction impacts

- Additional construction equipment
- Limited parking availability
- Sounds
- Dust



## Efforts to minimize construction impacts

- Construction signage placed around the sites.
- Any temporary closures will be communicated in advance.
- Any changes to garbage and US Postal services will be communicated in advance.
- Residents will be informed throughout construction.

Regular work hours are Monday-Friday 7:00 a.m. to 5:30 p.m.  
Permission for occasional weekend work may be granted, if required.



# Keeping You Informed Roadwork.nola.gov

The screenshot shows the Roadwork.nola.gov website. At the top, there's a header with the City of New Orleans logo and the site name. Below the header is a search bar with the placeholder text "Get Started Here! Enter an address to get block-to-block details on construction projects". A callout points to the search bar with the text "Enter your address here". To the left of the map is a "Show Layer" panel with three options: "Pavement Condition", "Planned Road Construction" (which is selected), and "Roads Under Construction Now". Below this is a "Legend" for "Planned Road Construction" with various categories like "Full Reconstruction", "Pavement Mill/Overlay", etc. A callout points to the legend with the text "Choose to view pavement condition, planned work or roads under construction now". On the right side of the map, there's a callout that says "Tell us what you think of the site or download the data" with an arrow pointing to a link in the top right corner. The main map area shows a street grid with colored overlays indicating construction projects. At the bottom, there's a detailed view of a specific block, the "6800 block of Vicksburg St". This view includes a "Pavement Condition" section showing "Failure", a "Work Status" section with project details (Project ID: RR088, Repair Type: Full Reconstruction, Status: Planned, Start: Jul-Sep 2021, End: Jul-Sep 2022), and a "Water, Sewer, and/or Drainage Work" section showing "Drainage Line: Sewer Line, and Water Line Replacement" with a status of "Planned". A callout points to this detailed view with the text "Get block-by-block information about the work schedule, type of repairs and what to expect during construction". On the right side of the screenshot, there's a white box with the text "CHECK OUT THE NEW FEATURES!" followed by a list of features: "mobile-friendly", "clean design", "improved functionality", and "enhanced content". At the bottom of this box is the website URL "roadwork.nola.gov".

**ROADWORK** CITY OF NEW ORLEANS  
ROADWORK.NOLA.GOV

Get Started Here! Enter an address to get block-to-block details on construction projects

Enter your address here

Show Layer

- Pavement Condition
- Planned Road Construction**
- Roads Under Construction Now

Legend

Planned Road Construction

- Full Reconstruction
- Pavement Mill/Overlay
- Patch Concrete
- Incidental Road Repairs
- Non-Paving Incidentals
- Streetscape
- Bridge Replacement
- Future Road Work
- Pending

Choose to view pavement condition, planned work or roads under construction now

Tell us what you think of the site or download the data

**ROADWORK** CITY OF NEW ORLEANS  
ROADWORK.NOLA.GOV

**CHECK OUT THE NEW FEATURES!**

- ✓ mobile-friendly
- ✓ clean design
- ✓ improved functionality
- ✓ enhanced content

roadwork.nola.gov

6800 block of Vicksburg St  
From Chapelle St to Mouton St in Lakeview, CA

Pavement Condition  
Failure

Work Status

Project  
RR088 - Lakeview North Group F (FR)

Schedule  
Start: Jul-Sep 2021  
End: Jul-Sep 2022

Street Repair Work

Project ID	Repair Type	Status
RR088	Full Reconstruction	Planned

Water, Sewer, and/or Drainage Work

Work Type	Drainage Line: Sewer Line, and Water Line Replacement	Status
		Planned

PLEASE NOTE: The content provided on roadwork.nola.gov is subject to change pending unforeseen site conditions, weather delays, constructability issues, etc.

# Stay Connected With Us



Construction Hotline: 504.658.ROAD (7623)



[Facebook.com/roadworkNOLA](https://www.facebook.com/roadworkNOLA)



[@roadworkNOLA](https://twitter.com/roadworkNOLA)



We have also joined Next Door!





# Contact Information:

Department of Public Works

Cheryn Robles

504-658-ROAD (7623)

roadwork@nola.gov



# Discussion