



St. Claude Group E Pre-Construction Community Meeting

City of New Orleans

December 7, 2020



Agenda and House Rules

- **Introductions**

Benaiah Harvey, Neighborhood Liaison, Mayor's Neighborhood Engagement Office

- **St. Claude Group E**

Michael Chorazak, Project Manager, Department of Public Works

- **What to expect during construction**

Matthew Day, Community Outreach Manager, RoadworkNOLA

- **Questions & Answers**

Benaiah Harvey

House Rules

- Allow one person to speak at a time.
- Questions about the project can be submitted via email to Benaiah.Harvey@nola.gov and via text to 504-499-0842.
- Keep your comments concise and relevant.

Safety Guidelines for Contractors During COVID-19

- Single point of entry into the jobsite and check-in/check-out of all workers.
- Temperature scan upon entry and anyone exhibiting signs of illness not allowed on site.
- Thorough daily cleaning of work areas. Wipe down of surfaces and frequently touched items.
- Handwashing stations provided with mandated proper handwashing at intervals throughout the day.
- No interactions with more than 10 people and maintaining at least 6 feet space between workers.
- Educational literature posted in multiple languages, along with daily training on appropriate conduct.
- Immediate reporting of any cases of known COVID-19.
- All progress meetings will continue as virtual meetings.



Capital Improvement Program Highlights

- **More than \$2.2B worth of combined DPW / SWBNO work**
 - Most comprehensive infrastructure program our region has seen in a generation.
 - More than **200** individual projects - every neighborhood will feel a positive impact.
 - **Multiple Funding Sources:** FEMA-funded road / waterline work, FEMA-funded Hazard Mitigation Grant Program (HMGP) projects, HUD-funded National Disaster Resiliency Competition (NDRRC) grant projects, SWB-funded Sewer System Evaluation and Rehabilitation Program (SSERP) (sewer consent decree) work and City-funded bond project work.
 - Work will create **thousands** of construction jobs across the city and maximize economic opportunity for the City's small and disadvantaged businesses

Types of CIP Construction

Full Reconstruction

Repair sewerage, water, and drainage lines, rebuild the street entirely, and repair sidewalks and curbs.

Patch Mill/Overlay

Repave the asphalt roadway from curb to curb and repair damaged sidewalks.

Patch Concrete

Remove damaged portions of the concrete roadway and replace it with new smooth concrete pavement and repair damaged sidewalks.

Types of CIP Construction

Incidental Road Repairs

Remove damaged portions of the asphalt roadway and replace it with new smooth pavement.

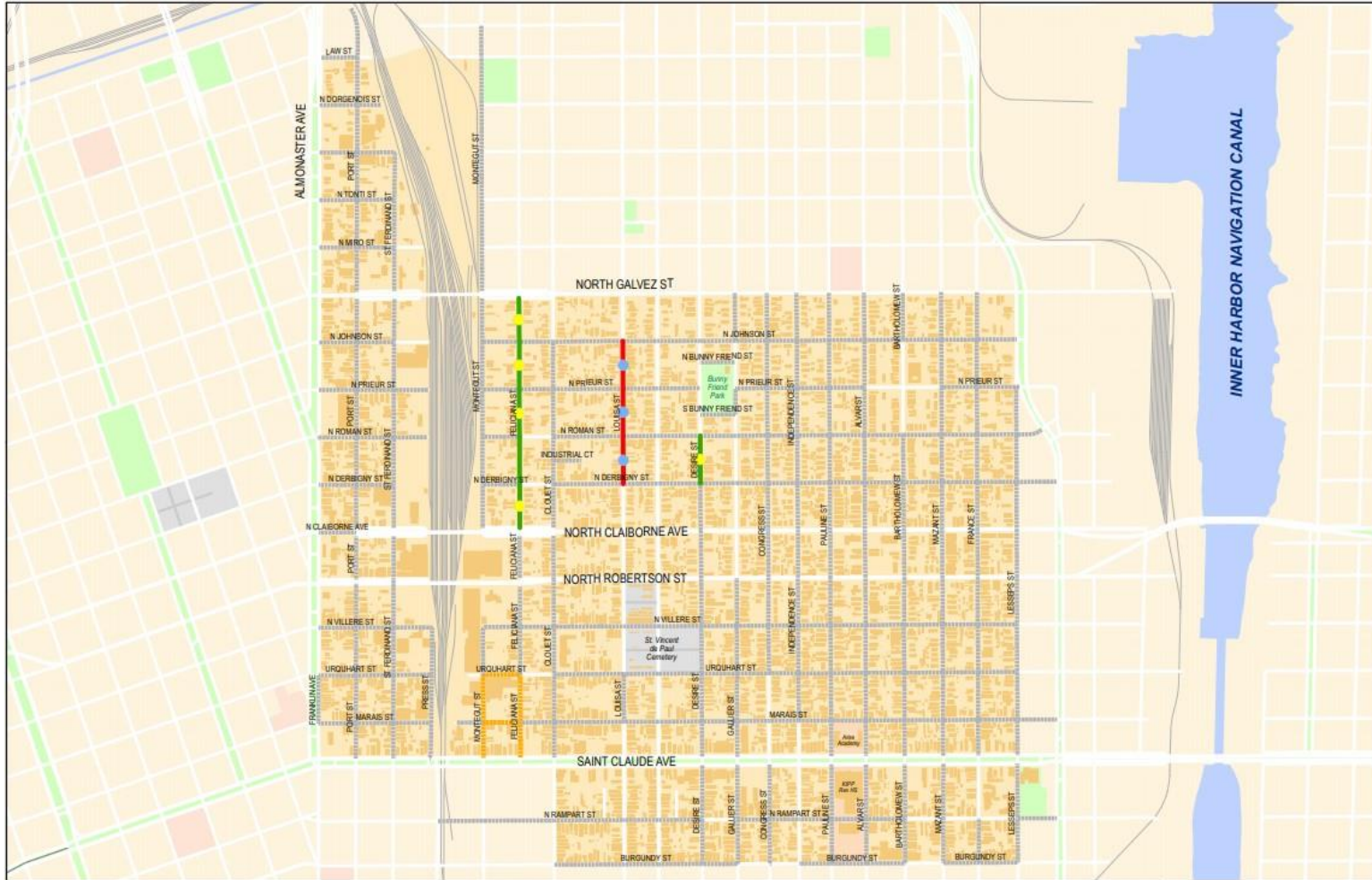
Non-Paving Incidentals

Repair damaged sidewalks, driveway aprons and curbs within the public right-of-way.

Other Group Project

Street is in the design phase or is planned to be built in a future project.

St. Claude Group E Full Depth Reconstruction



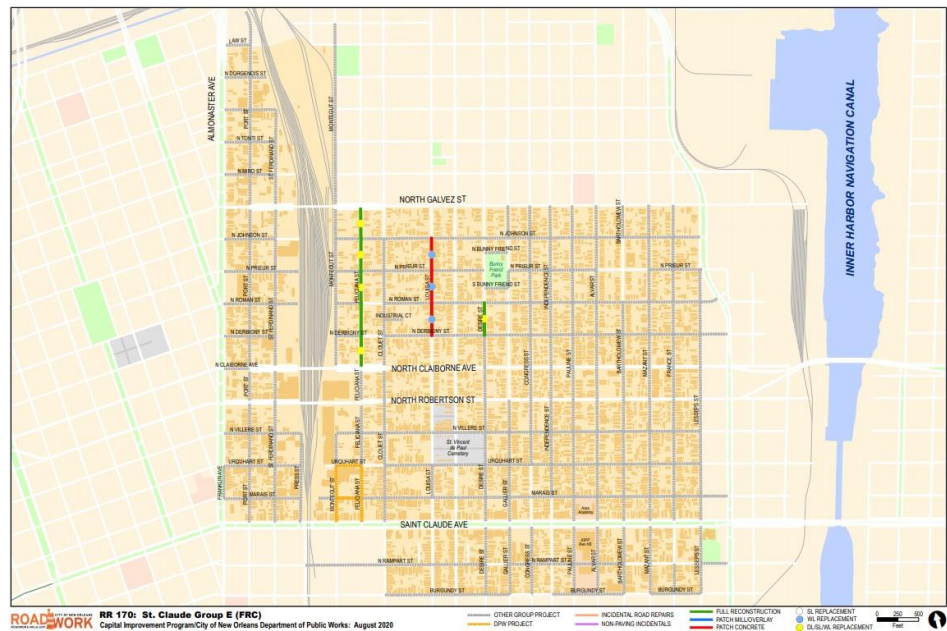
ROADWORK CITY OF NEW ORLEANS **RR 170: St. Claude Group E (FRC)**
Capital Improvement Program/City of New Orleans Department of Public Works: August 2020

- - - - - OTHER GROUP PROJECT
 - - - - - DPW PROJECT
 - - - - - INCIDENTAL ROAD REPAIRS
 - - - - - NON-PAVING INCIDENTALS
 - - - - - FULL RECONSTRUCTION
 - - - - - PATCH MILLOVERLAY
 - - - - - PATCH CONCRETE
 ○ SL REPLACEMENT
 ● WL REPLACEMENT
 ● DLS/W REPLACEMENT

0 250 500
Feet

Project Overview

- **Design:** Hatch Engineering
- **Construction:** Boh Bros. Construction Co., L.L.C.
- **Construction Cost:** \$4.5M
- **Timeline:** December 2020 to Winter 2021



Scope of work

- Repave the asphalt roadway from curb-to-curb;
- Patch the roadway with asphalt or concrete;
- Repair damaged sidewalks and driveway aprons;
- Install Americans with Disabilities Act-compliant curb ramps at intersection; and
- Replace / repair damaged underground water, sewer, and/or drainage lines.

Waterline Replacements or Repairs

- Minimal water service disruptions
- Notifications will be sent to residents 48-hours prior to full waterline closures and 24-hours notice will be given for waterline test closures (per Louisiana Department of Health guidelines)



Patch Mill / Overlay



- Roadway will be re-surfaced with asphalt
- Repairs may be made to some damaged curbs, sidewalks and driveway aprons

Sidewalks

- Sidewalk panels adjacent to Americans with Disabilities Act (ADA)-compliant ramps will be replaced with new sidewalks.
- New sidewalks and ramps will meet ADA-regulations.



Americans with Disabilities Act-Compliant Curb Ramps



Americans with Disabilities Act (ADA)-compliant curb ramps at sidewalk corners ensure accessibility for people who are visually or physically impaired, using wheelchairs or strollers.

St. Claude Group E



Existing conditions at the corner of Feliciana and N. Prieur streets.

Future Conditions



An example of a repaved area on the Little Woods Group A project.

Project Timeline

<u>Milestone</u>	<u>Date</u>
Construction Start	December 2020
Construction Complete	Winter 2021

* Please note that all schedules are subject to change and weather delays.

Archaeology and Historic Preservation

Project may involve archaeology

- Site may include prehistoric and or colonial sites. If so, an archaeological monitor will be onsite where digging occurs, for example, subterranean utility work in archaeologically sensitive areas or near cemeteries.
- Email Archaeologist, Michael Godzinski at archaeology@nola.gov

Project may also involve historic preservation

- Character Defining Features in National Register Historic Districts may include stone curbs, street name tiles, brick or stone sidewalks, brick gutter bottoms and two-track driveways to name a few.
- For a complete slideshow of Character Defining Features, visit <https://roadwork.nola.gov/historic-preservation/>
- Email Historic Preservation Specialist, Philip Gilmore at historicpres@nola.gov

What to Expect During Construction



Sequencing of this project will be communicated with residents upon finalization. There will be signage placed prominently to indicate road closures for vehicular, pedestrian and bike traffic. Impacts related to sequencing will be communicated to the community by the RoadworkNOLA office.

Temporary construction impacts

- Additional construction equipment –
 - **Staging for this project has yet to be determined.**
- Limited parking availability
- Sounds
- Dust

Efforts to minimize construction impacts

- ✓ Construction signage placed around the sites.
- ✓ Any temporary closures will be communicated in advance.
- ✓ Construction equipment will not be staged in areas that prohibit residential access and parking.
- ✓ Any changes to garbage and US Postal services will be communicated in advance.
- ✓ Residents will be informed throughout construction.

Regular work hours are Monday-Friday 7 a.m. to 5:30 p.m.
Permission for occasional weekend work may be granted, if required.

Keeping You Informed Roadwork.nola.gov

Enter your address here

Tell us what you think of the site or download the data

Choose to view pavement condition, planned work or roads under construction now

Get block-by-block information about the work schedule, type of repairs and what to expect during construction

ROADWORK CITY OF NEW ORLEANS ROADWORK.NOLA.GOV

CHECK OUT THE NEW FEATURES!

- ✓ mobile-friendly
- ✓ clean design
- ✓ improved functionality
- ✓ enhanced content

roadwork.nola.gov

6800 block of Vicksburg St
From Chapelle St to Mouton St in Lakeview, CA

Pavement Condition
Failure

Work Status

Project	Street Repair Work	Water, Sewer, and/or Drainage Work
RR3 - Lakeview North Group F (FRC)	Project ID: RR08B Repair Type: Full Reconstruction Status: Planned	Work Type: Drainage Line, Sewer Line and Water Line Replacement Status: Planned

PLEASE NOTE: The content provided on roadwork.nola.gov is subject to change pending unforeseen site conditions, weather delays, constructability issues, etc.

Contact Us



Matthew Day
Outreach Manager
roadwork@nola.gov
504.658.7623



Phone

504.658.ROAD (7623)



Email

roadwork@nola.gov



Website

roadwork.nola.gov



Social Media

@roadworkNOLA



City of New Orleans

