



Sewerage & Water Board of New Orleans

Keeping New Orleans Safe, Healthy and Thriving

The Board of Directors

Membership

- 11 members:
 - The Mayor, who serves as President
 - 2 Board of Liquidation appointees
 - 1 Member of the City Council or designee
 - 7 citizen members selected by the Mayor; confirmed by City Council
- Membership must:
 - Represent each City Council district, plus 2 consumer advocates
 - Reflect New Orleans' gender and racial diversity
 - Have relevant professional experience
- They serve 4-year terms (2 max)
- A quorum = 5 members

Selection Process

- A selection committee comprised of leaders of local higher education institutions, plus the Chamber of Commerce, Regional Black Chamber and Urban League, must submit three potential nominees for each vacancy.
- The Mayor then selects nominee, and the City Council confirms the appointment.

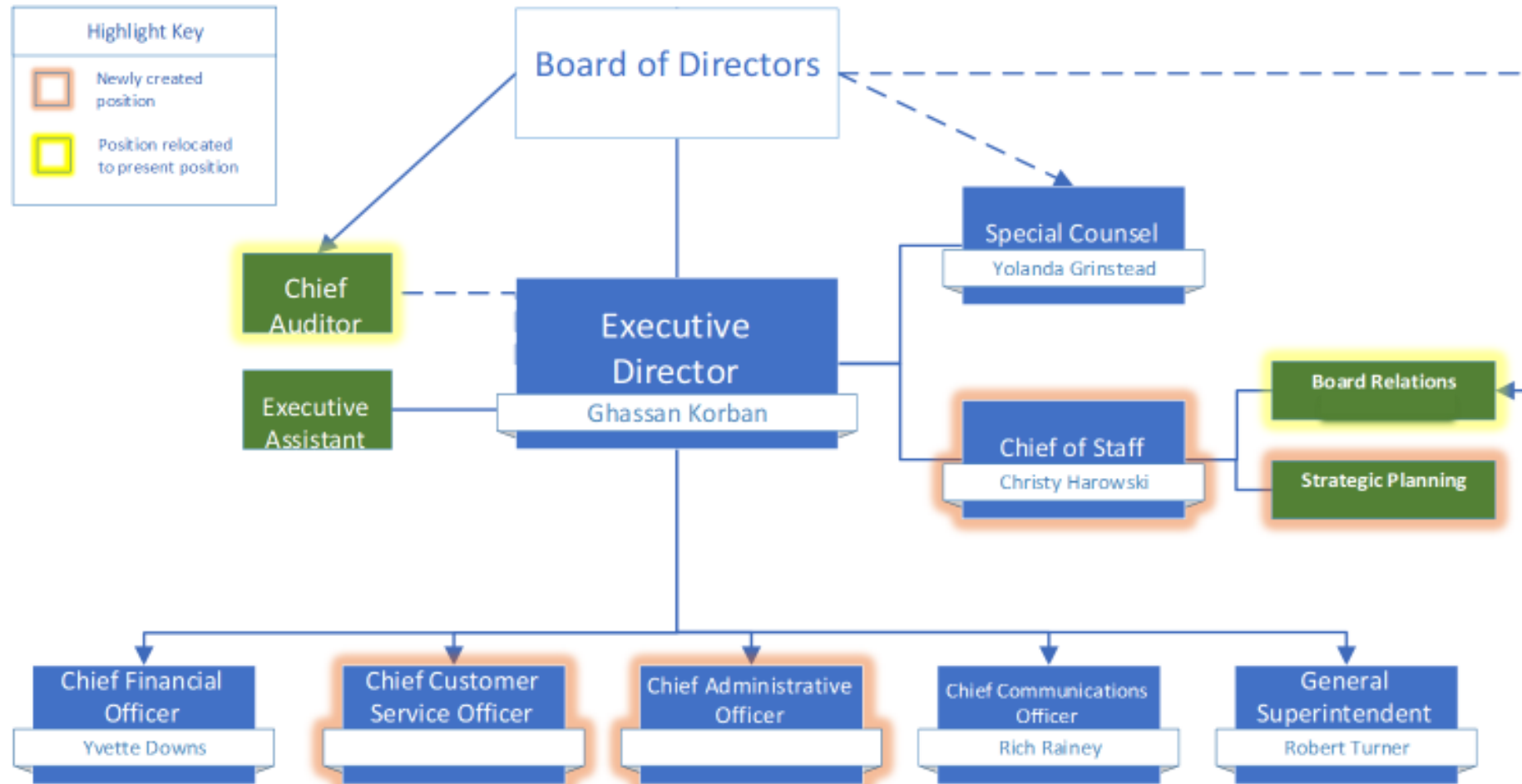


Current Board Members

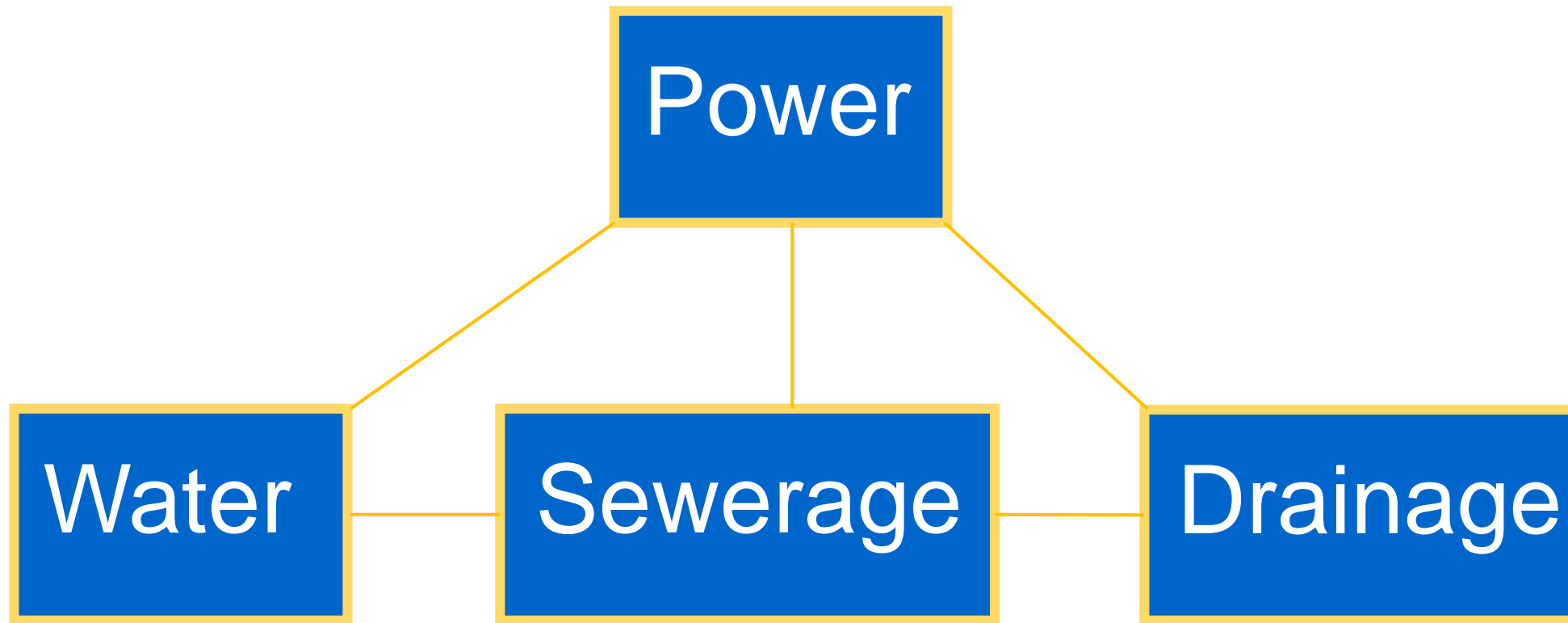
- Mayor LaToya Cantrell, President
- Tamika Duplessis, President Pro Tem, District E
- City Council Member Jay H. Banks
- Ralph Johnson, Board Liquidation, City Debt Syndicated Member
- Lynes R. “Poco” Sloss, Board of Liquidation, City Debt Syndicated Member
- Alejandra Guzman, Consumer/Community Advocate, District A
- Joseph Peychaud, Consumer/Community Advocate
- Robin Barnes, Consumer/Community Advocate
- Janet Howard, District B
- Maurice G. Sholas, District C
- One vacancy, District D



SWBNO Organizational Chart



Operations



Power

- SWBNO generates its own 25 Hz and 60Hz electricity from several power sources - steam, natural gas, diesel, and electro-motive diesel (EMD).
 - All in place between 1909 – 1981; EMDs in 2017.



- This requires extensive, expensive equipment:
 - 6 boilers, 5 turbines, 26 generators, 5 frequency changers, and 5 EMDs
 - Due to age, much of the equipment requires extensive, expensive maintenance.



- SWBNO uses self-generated power to run some of our drainage and water pumps. Electricity supplied by Entergy powers the rest of the system.



SWBNO Self-Generated Power

UNIT	FREQUENCY	MEGAWATTS	STATUS
Turbine 1	25 Hz	6 MW	Available
Turbine 3	25 Hz	~7 MW*	Available
Turbine 4	25 Hz	20 MW	Available
Turbine 5	25 Hz	20 MW	Available
Turbine 6	60 Hz	15 MW**	Available
Carrollton Freq. Changer (1&2)	Converts 60 to 25 Hz	8.5 MW	Available
Station D Freq. Changer (3&4)	Converts 60 to 25 Hz	12 MW	Available
Five EMDS	25 Hz	12.5 MW	Available
TOTAL AVAILABLE	25 Hz	86 MW	86 MW
TOTAL AVAILABLE	60 Hz	(Entergy Power and Freq. Changers)	

*Actual capacity, not nameplate, due to age of machinery

**T6 can produce 3.75 MW of 25 Hz power through current frequency changer



WATER

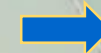
Two drinking water Systems:

- East Bank, Carrollton Water Plant
- West Bank, Algiers Water Plant

Water is pumped from the Mississippi River



Purified multiple times and held in collection tanks



Then pumped into the city as drinking water

- Broken pipes, aging meters, theft and non-billed consumption by some customers = 55% of New Orleans drinking water in 2017 did not generate revenue (*Water Audit Update 2008-2017*)



Sewerage

Sewerage pump stations collect water from sinks, tubs, toilets, garbage disposals and dishwashers.



Wastewater is taken to wastewater treatment plants (operated by Veolia) where solids are removed and the water is cleaned.



Clean water is then returned to Mississippi River.



SEWER CONSENT DECREE

PROGRESS 1997-Present Day

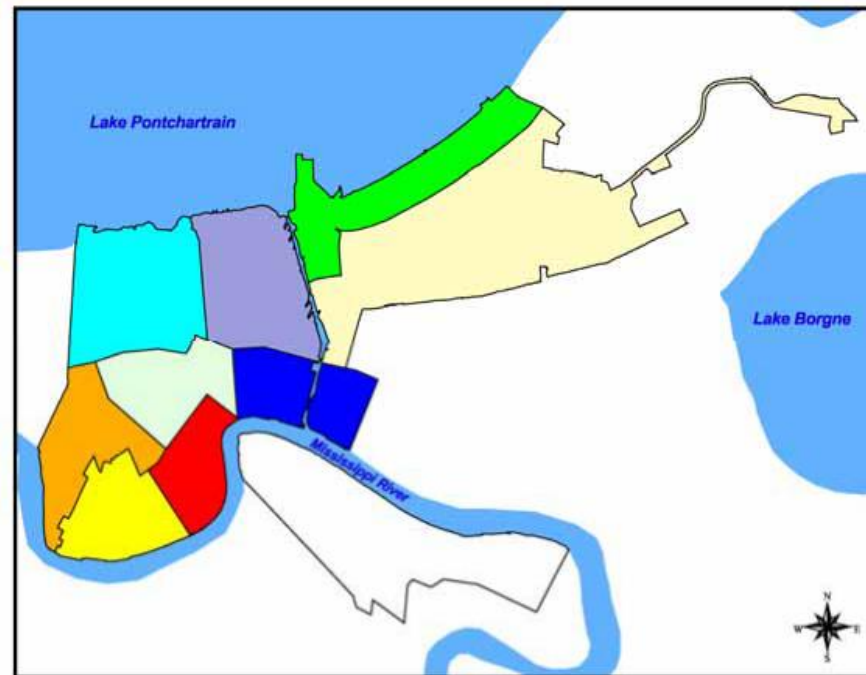
Remedial repairs and construction, preventive maintenance measures, unauthorized discharges, basin construction, private property sewer events, (required to respond within 4 hours of formal complaint)

Completed Basins

- 9th Ward – 2018
- Central Business District – 2005
- Uptown – 2005
- Gentilly – 2004
- Lakeview – 2001

Basins Underway

- New Orleans East – October 2019
- South Shore – October 2021
- Mid-City – July 2023
- Carrollton – October 2025



COMPLETION = all previously identified repairs under the SSERP and ESSA programs are completed in that zone

Drainage

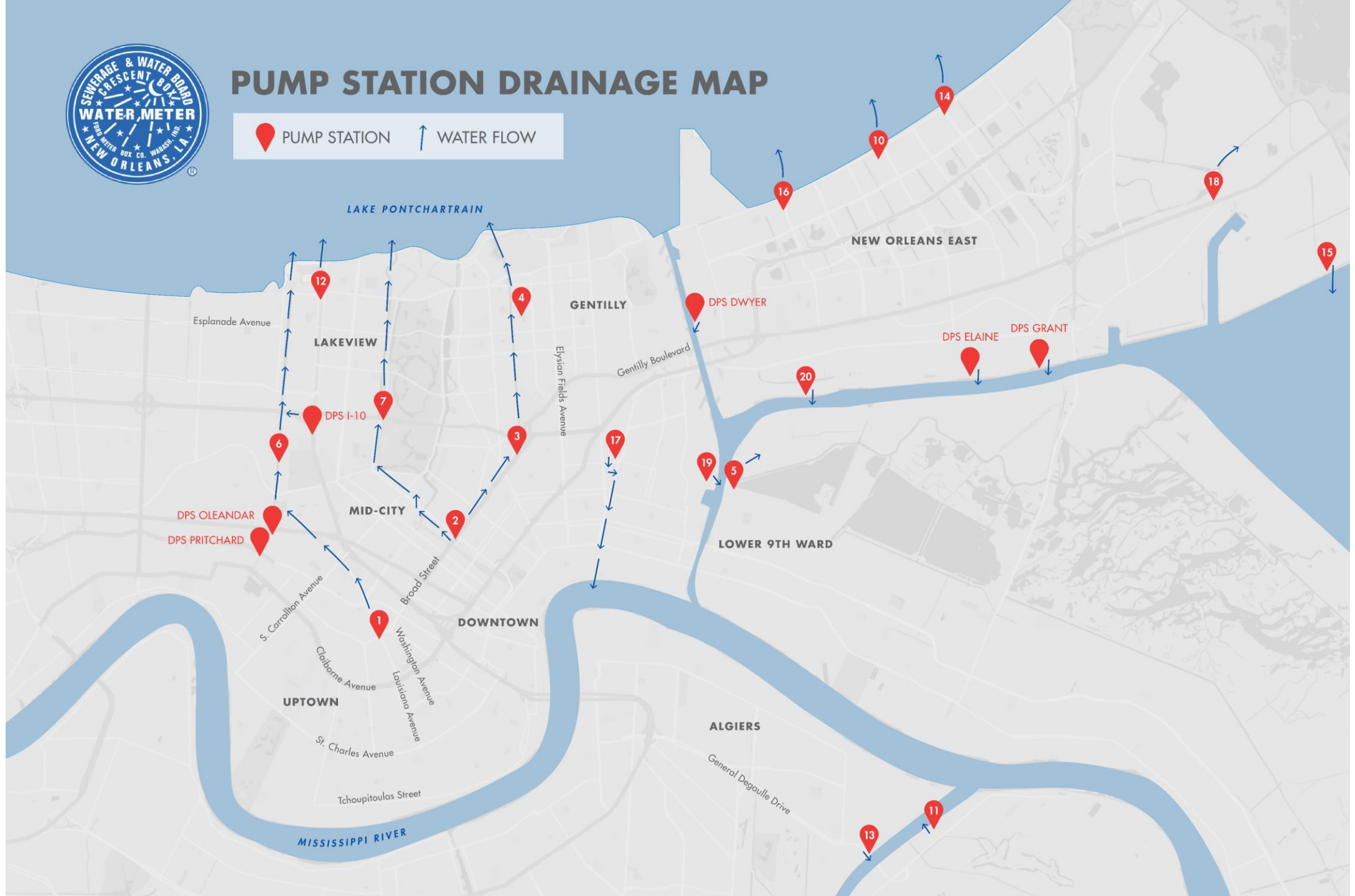
- **Catch Basins**
 - 72,000 catch basins in the City (Dept. of Public Works)
- **Conveyance Pipes**
 - Approximately 1,500 miles of drainage piping (under 36" DPW – 36" & over SWB)
- **Canals**
 - Approximately 200 miles of open and covered canals
- **Pumps**
 - 99 drainage pumps
 - 21 constant duty pumps
 - 24 underpass drainage pumps
- **Power**
 - 5 turbines
 - 3 Steam
 - 2 Duel fuel
 - 5 Frequency Changers
 - 5 EMDs (installed in 2017)





PUMP STATION DRAINAGE MAP

PUMP STATION WATER FLOW



How are Our Operations Funded?

Water and Sewer Services

- Customers pay monthly service rates.
- Rates have increased 10% each year since 2013. Final rate increase will occur in 2020.

Drainage

- Three property tax millages that generate approximately \$56M each year.

NOTE

Each division (water, sewer, drainage) is funded separately. While we are prohibited from comingling funds among divisions, we are able to “borrow” funds from one division to fund another in emergencies i.e. August 2017.

Because revenue is limited to water and sewer, we are actively pursuing multiple innovative sources for additional income, i.e. Fair Share, DEQ and WIFIA.



Fair Share

SWBNO Outcomes

YEAR	PROPOSED PROJECTS*	ANTICIPATED COST
2019	Master Plan Procurement & Initiation	\$1M
	Automated Meter Infrastructure (AMI) Procurement & Initiation	\$1M
	Cross Connection Phase 1 Remediation	\$2.5M
	TOTAL:	\$4.5M
2020	Master Plan Development	\$2M
	AMI Phase 1 (Survey)	\$2M
	SELA Debt	\$5.5M
	Drainage Canal Cleaning	\$1M
	Cross Connection Phase 2 Remediation	\$9M
	Sycamore Filter Gallery Design	\$1M
	TOTAL	\$20.5M
2021	AMI Phases 1&2 (Survey and Implementation)	\$5M
	SELA Debt	\$5.5
	Drainage Canal Cleaning	\$1M
	JIRR Water & Drainage Projects**	\$9.5M
	TOTAL	\$21M
2022	AMI Phase 2 (Implementation)	\$5M
	SELA Debt	\$10.7
	Drainage Canal Maintenance	\$300,000
	JIRR Water & Drainage Projects	\$2.5M
	Power Master Plan Project Implementation	\$2.5M
	TOTAL	\$21.5

* Where possible, using recurring funds strategically to increase bonding capacity for project underwriting (e.g., AMI and Sycamore Filter Gallery projects).

** Non-FEMA funded costs.

Ongoing Programs

- Sewer Consent Decree: \$206M
- JIRR: \$250M
- 5-Year Capital Plan
 - Projected completion, 2024

 Total Program
Phase Breakdown

Total 271 Projects - \$ 1.09 billion

