



S. Broad Street Rehabilitation Project

(Erato St. – Tulane Ave.)

Pre-Construction Public Meeting

City of New Orleans

Sept. 11, 2018

Agenda

- **Introductions**, Valerie Bouldin, Mayor's Office of Neighborhood Engagement
- **Project Overview**, Jennifer Ruley, Dept of Public Works
- **What to Expect During Construction**, Cheryn Robles, Dept of Public Works
- **Discussion**

Ground Rules

- Please be sure to sign in as we will continue to communicate with you throughout construction duration
- Submit general comments on cards, individual comments will be addressed by staff following the meeting
- Comment cards will be collected throughout the presentation
- Please limit comments to project-specific issues, individual issues will be addressed separately

Project Overview

- **Contractors:**

- AllStar Electric, LLC
- Barriere Construction, LLC
- Hard Rock Construction, LLC
- Pavement Markings, LLC

- **Cost:** Approximately \$1 M

- **Schedule:** 4-6 months (Sept 2018 – Feb 2019)

Project Area

S. Broad St. (Erato St. – Tulane Ave.; 0.8 mile)



Previous Work

Power-washed bridge

Replaced street lights



Problems Identified

Uneven pavement

Water pools



Problems Identified

Uneven decks

Missing guardrails



Problems Identified

Wide travel lanes

Undefined safe travel route for cyclists



Problems Identified



Problems Identified



Problems Identified

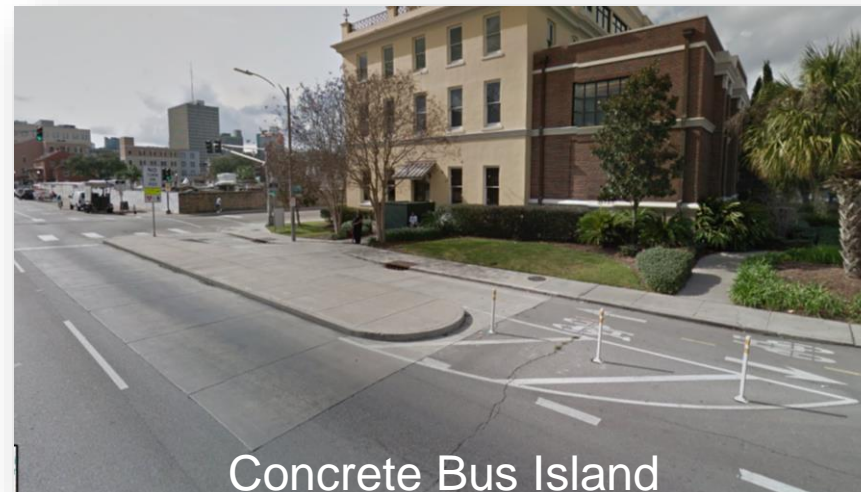


Project Scope

- Installing a new traffic signal with pedestrian countdown timers at Gravier Street (now activated)
- Making guardrail and deck improvements
- Repairing damaged catch basins and grates
- Resurfacing asphalt

Project Scope Continued

- Adding roadway striping including a protected bike lane
- Adding crosswalk striping
- Installing new concrete bus islands
- Re-organizing curb space designations



****NEW**** Intersection Crossing Markings

Place at conflict points to improve visibility and awareness



Source: seattlebikeblog.com



Source: cmap.illinois.gov

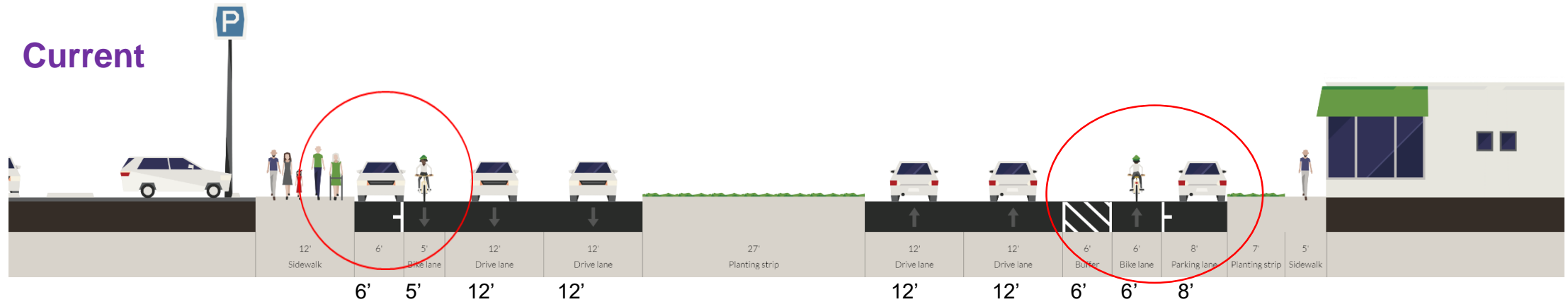
Broad Street (Thalia to Erato facing North)

Current Conditions

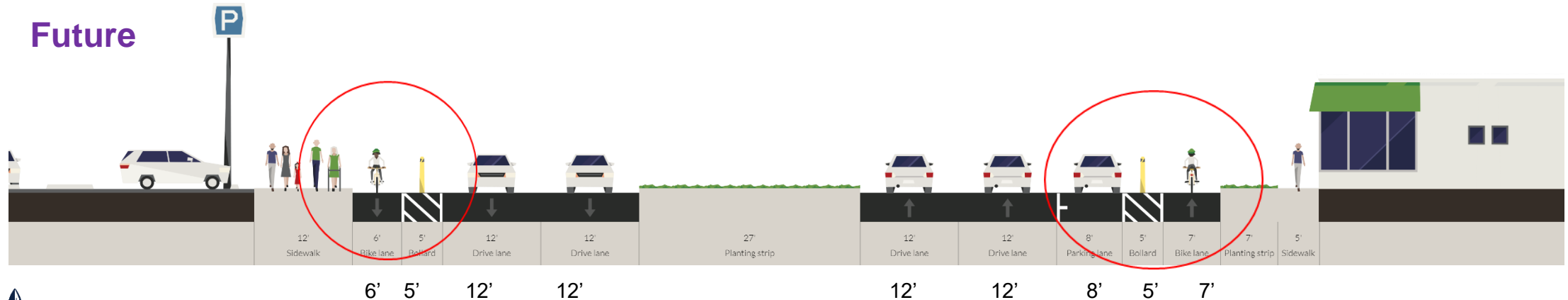


Broad Street (Thalia to Erato facing North)

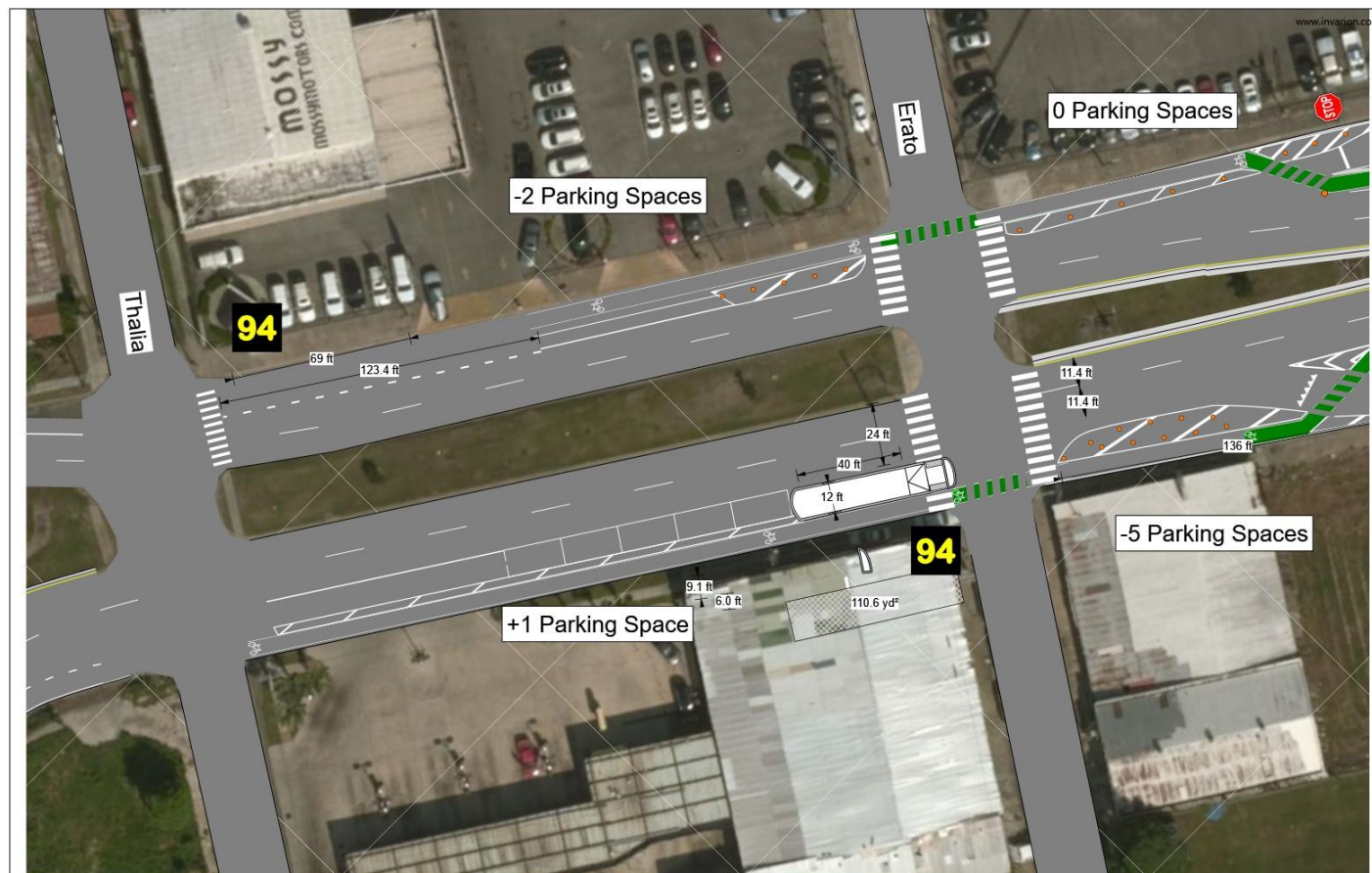
Current



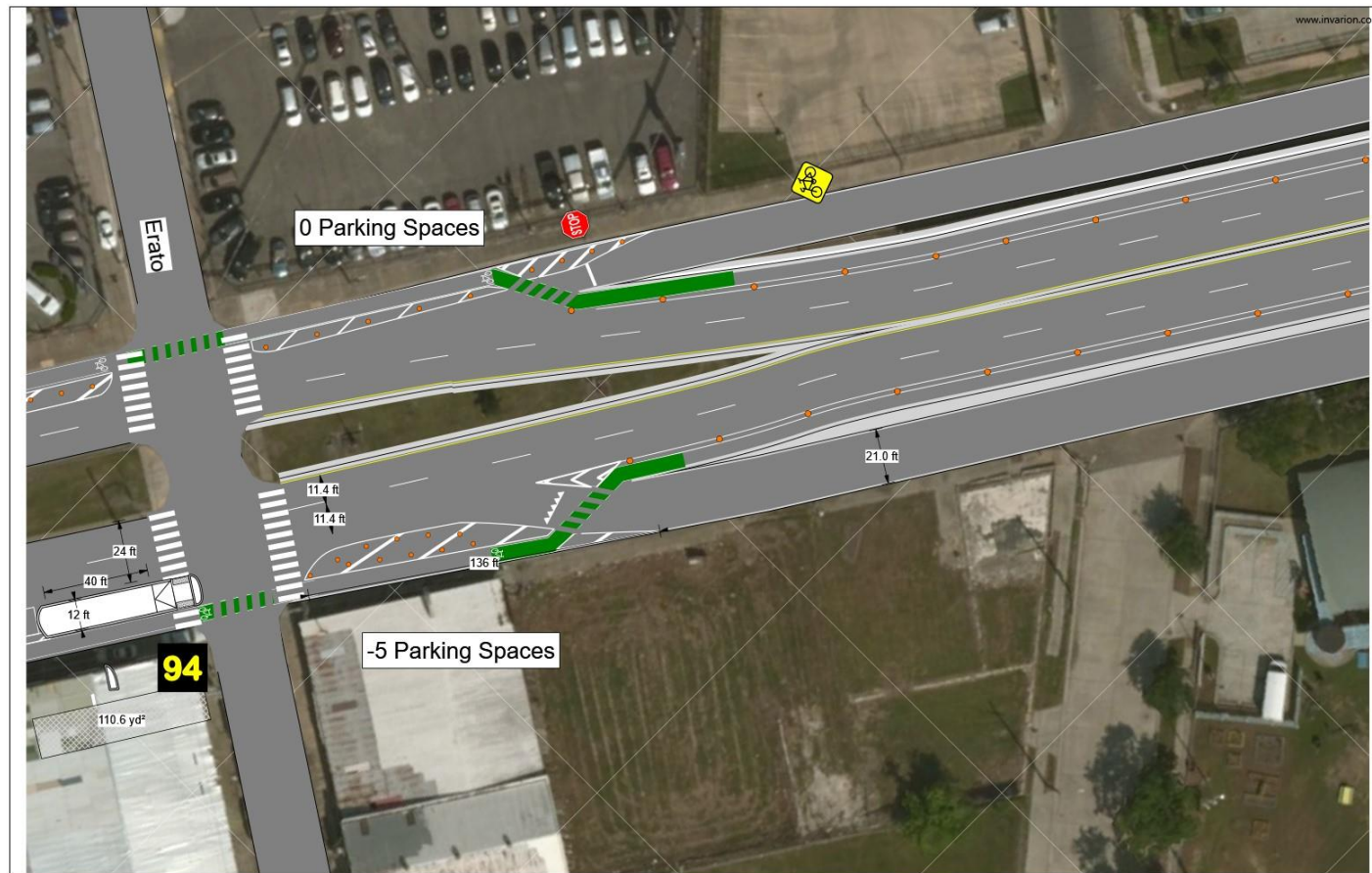
Future



Thalia – Erato St.



Erato – Clio St.



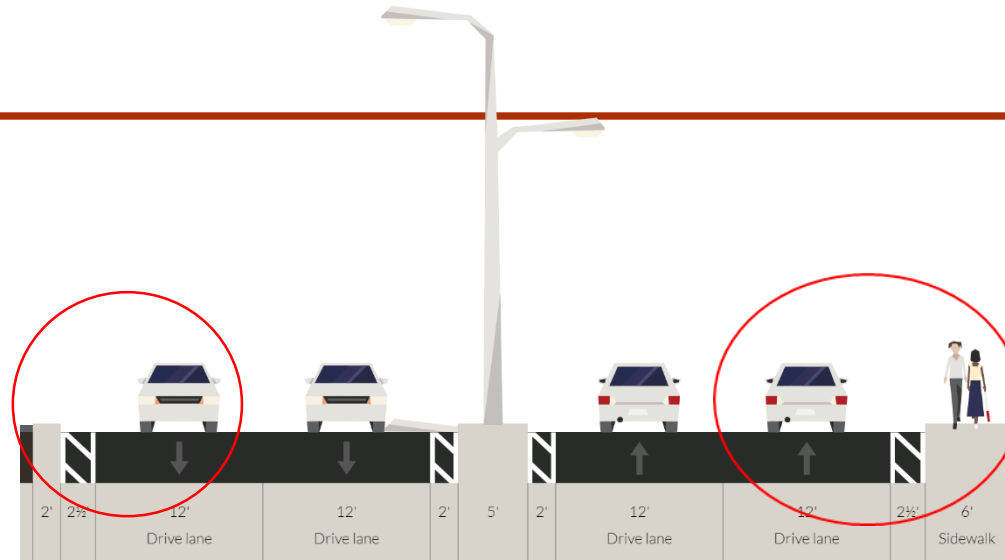
Broad Street (Bridge facing North)

Current Conditions

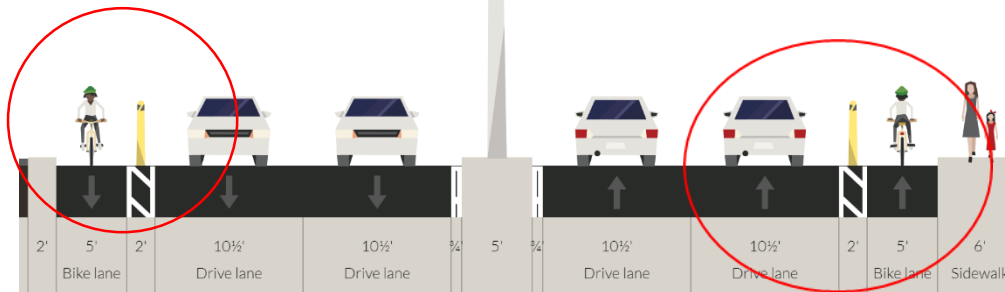


Broad Street (bridge facing North)

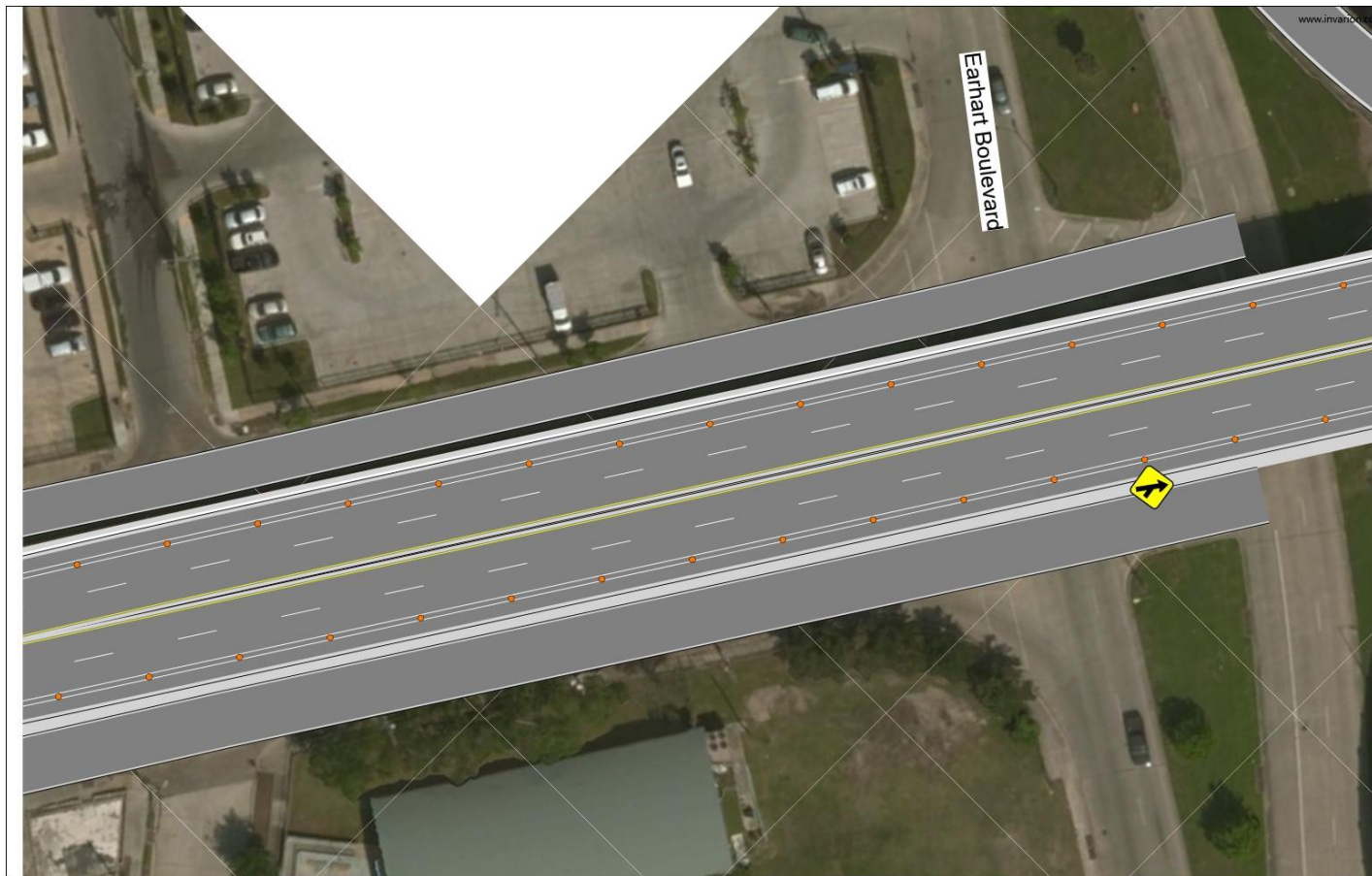
Current



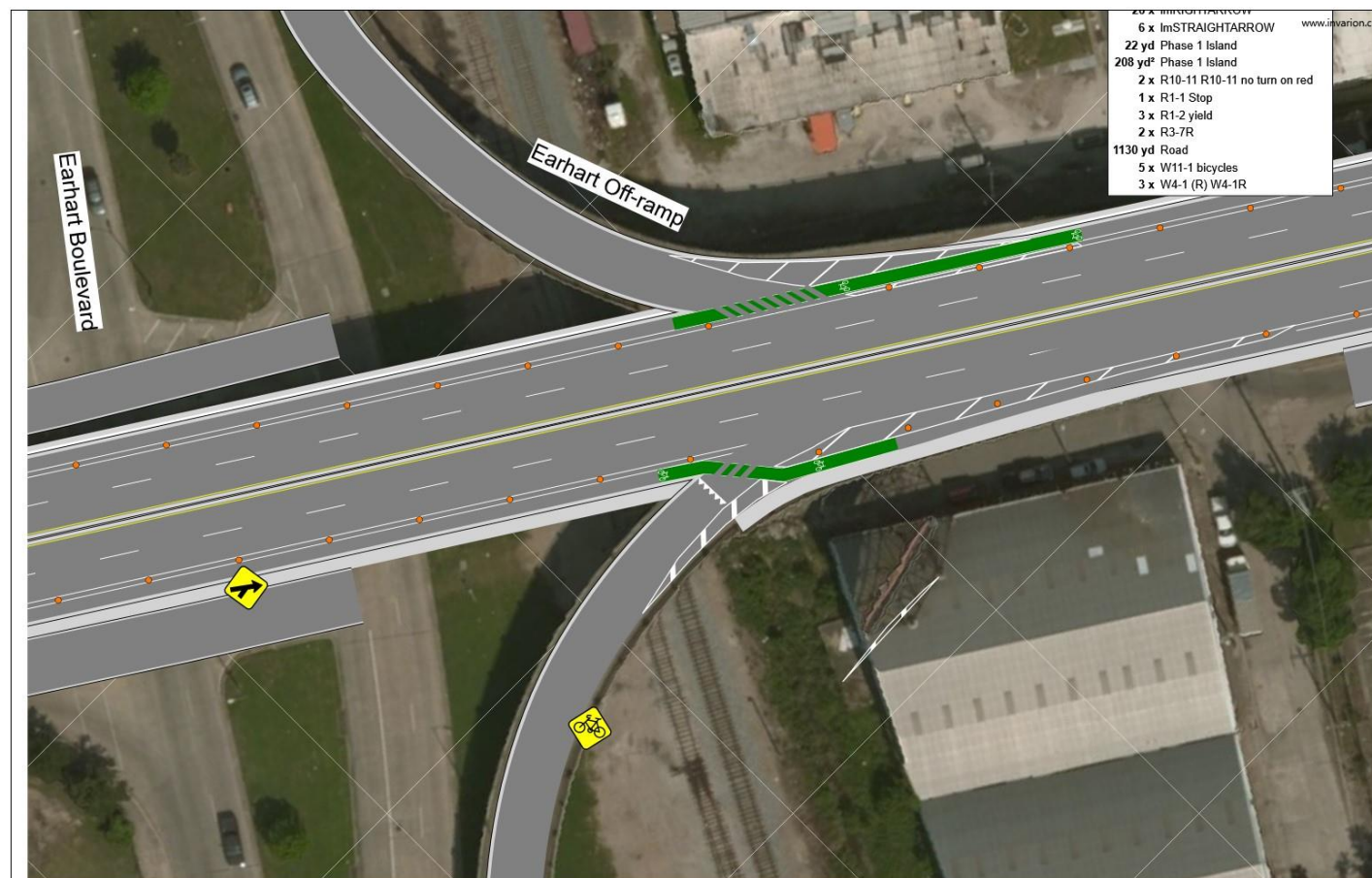
Future



Clio St. – Earhart Blvd.



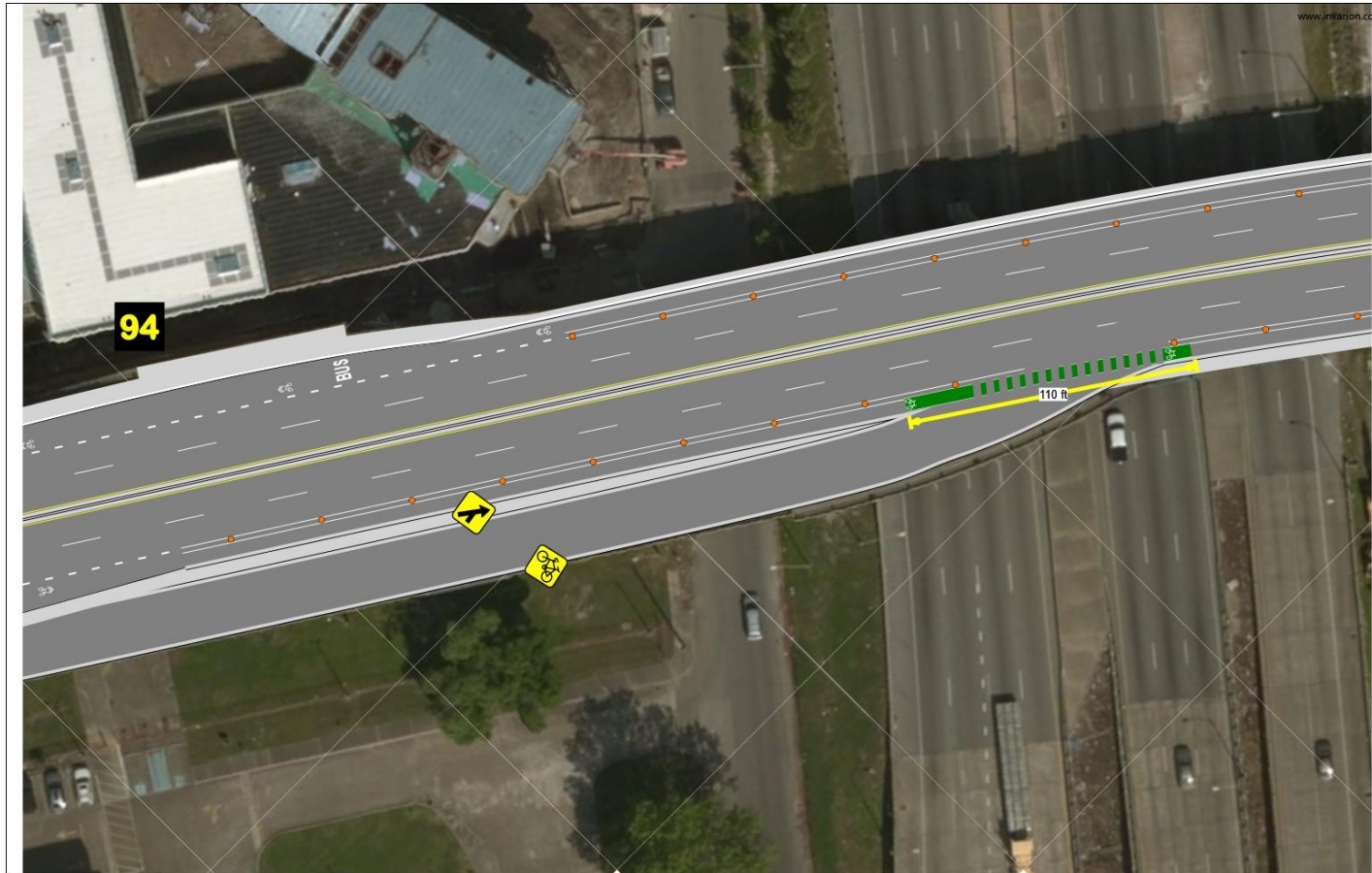
Earhart Blvd. – Earhart On/OFF Ramp



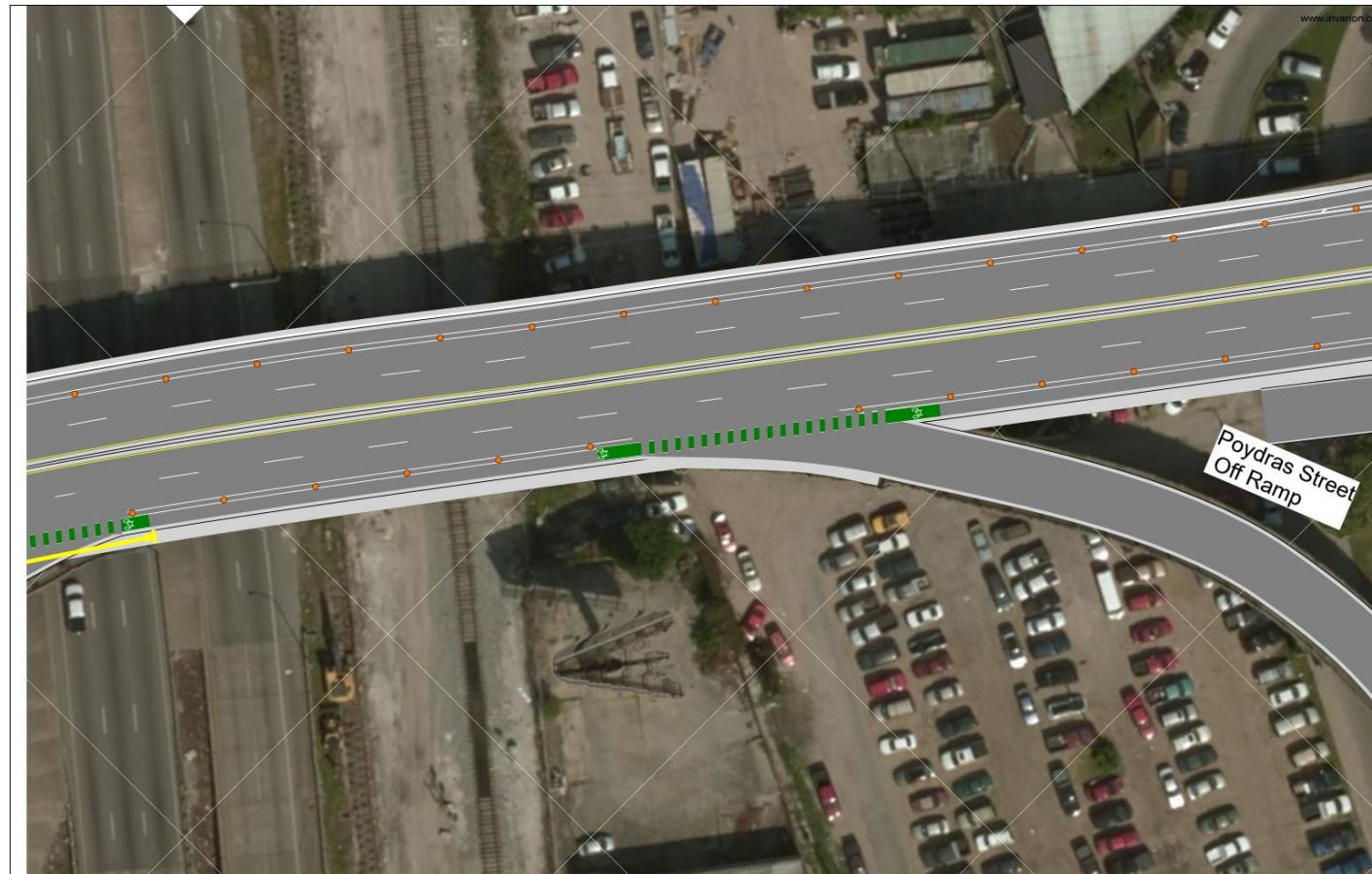
Broad St. Overpass (1)



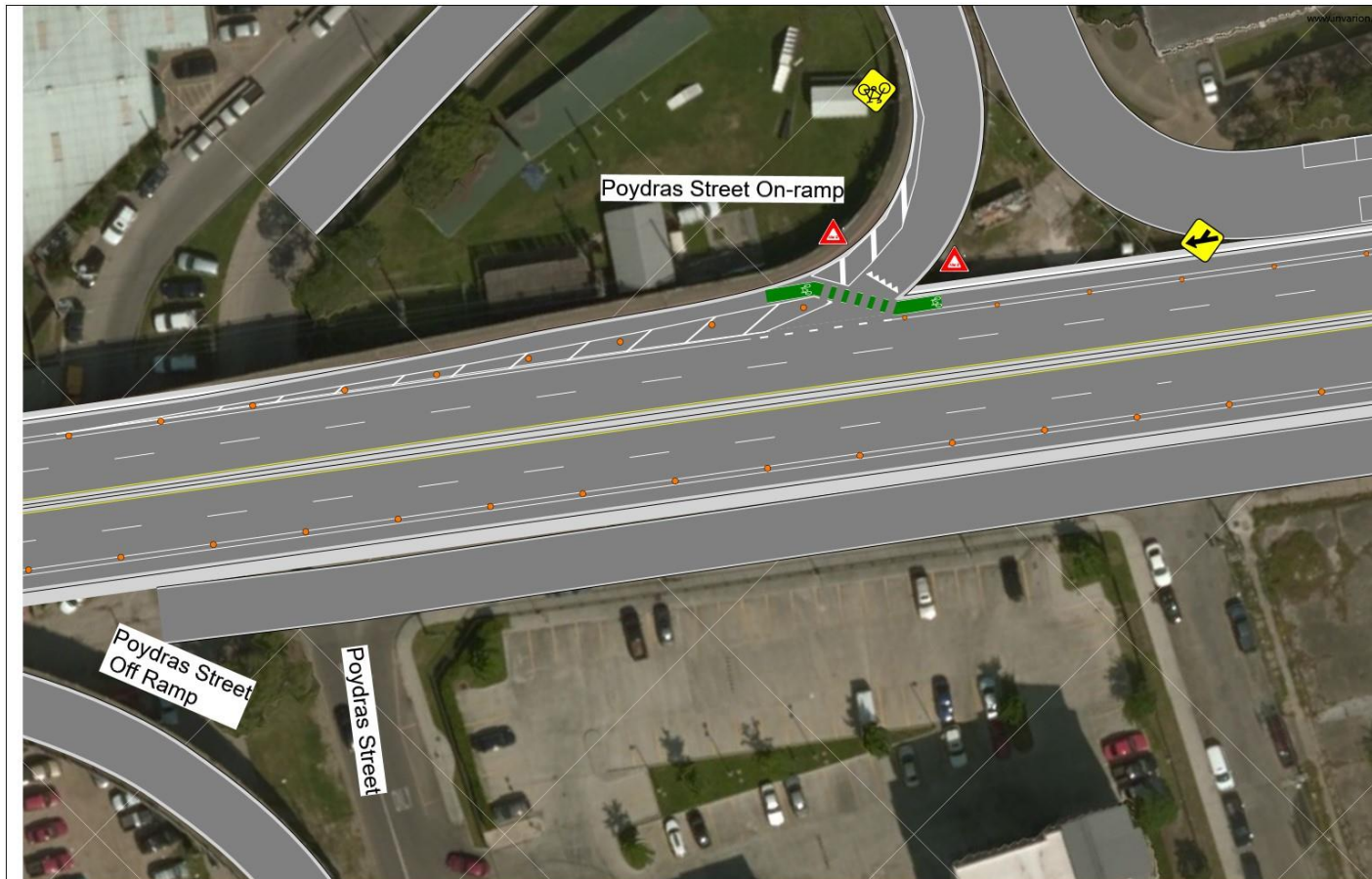
Broad St. Overpass (2)



Poydras St. Off Ramp



Poydras St. On Ramp

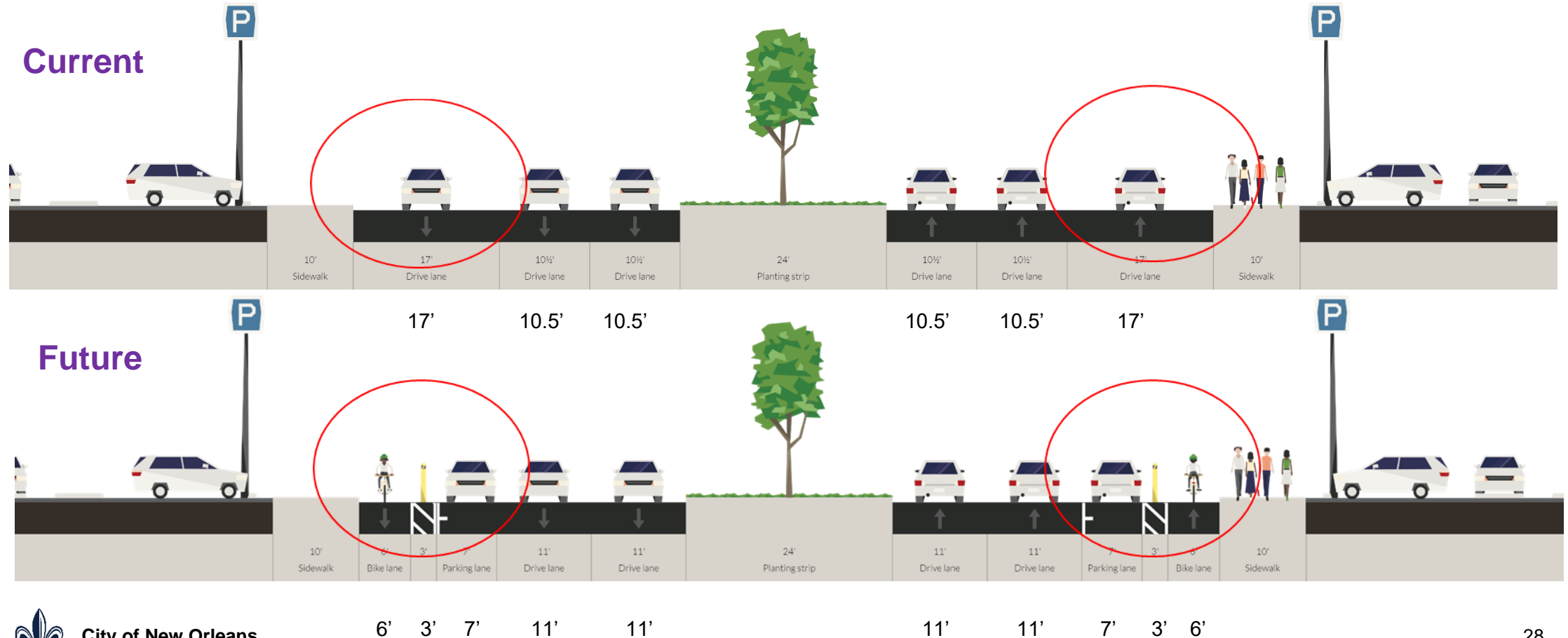


Broad Street (Gravier to Tulane facing North)

Current Conditions

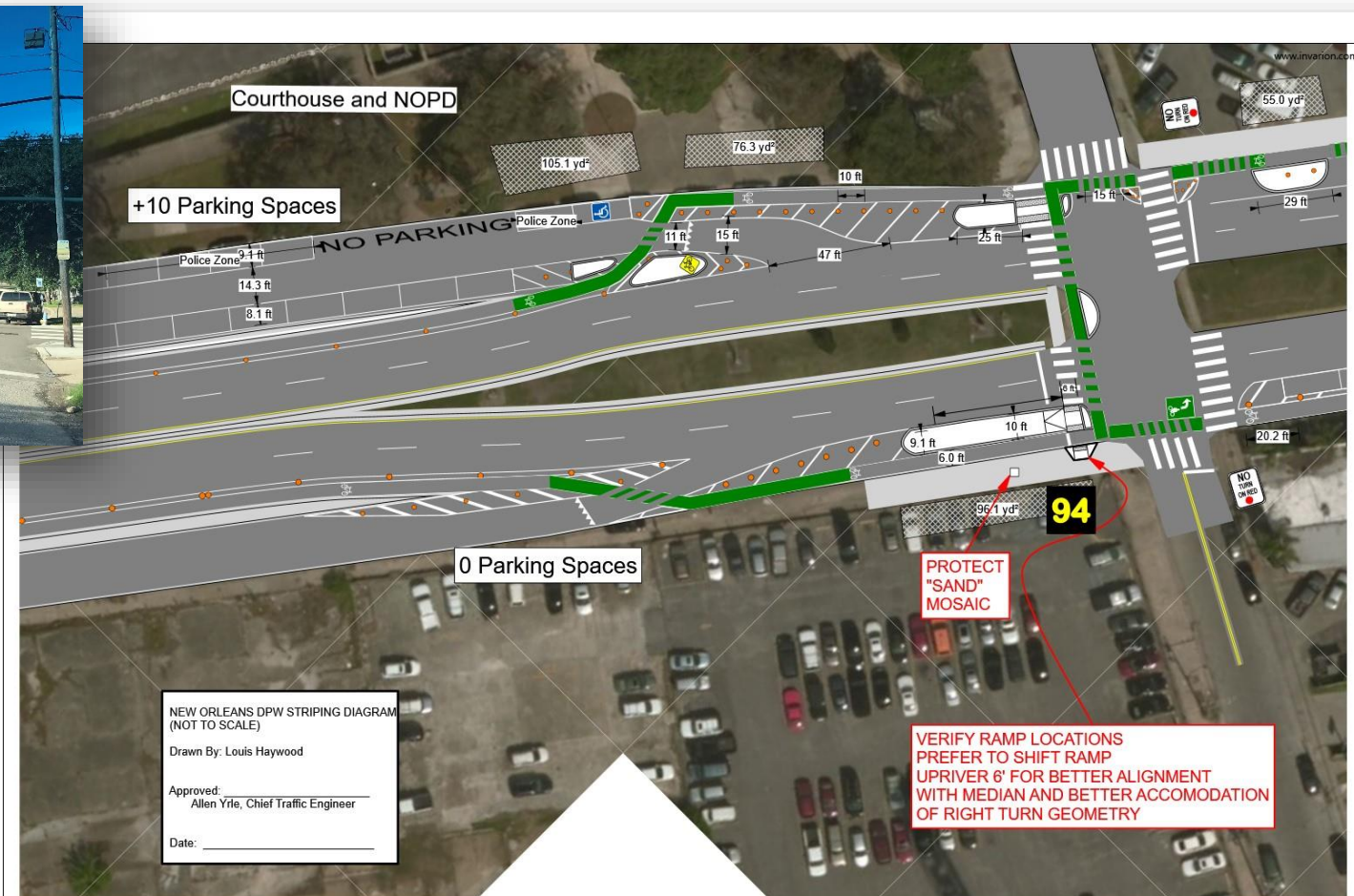


Broad Street (Gravier to Tulane facing North)



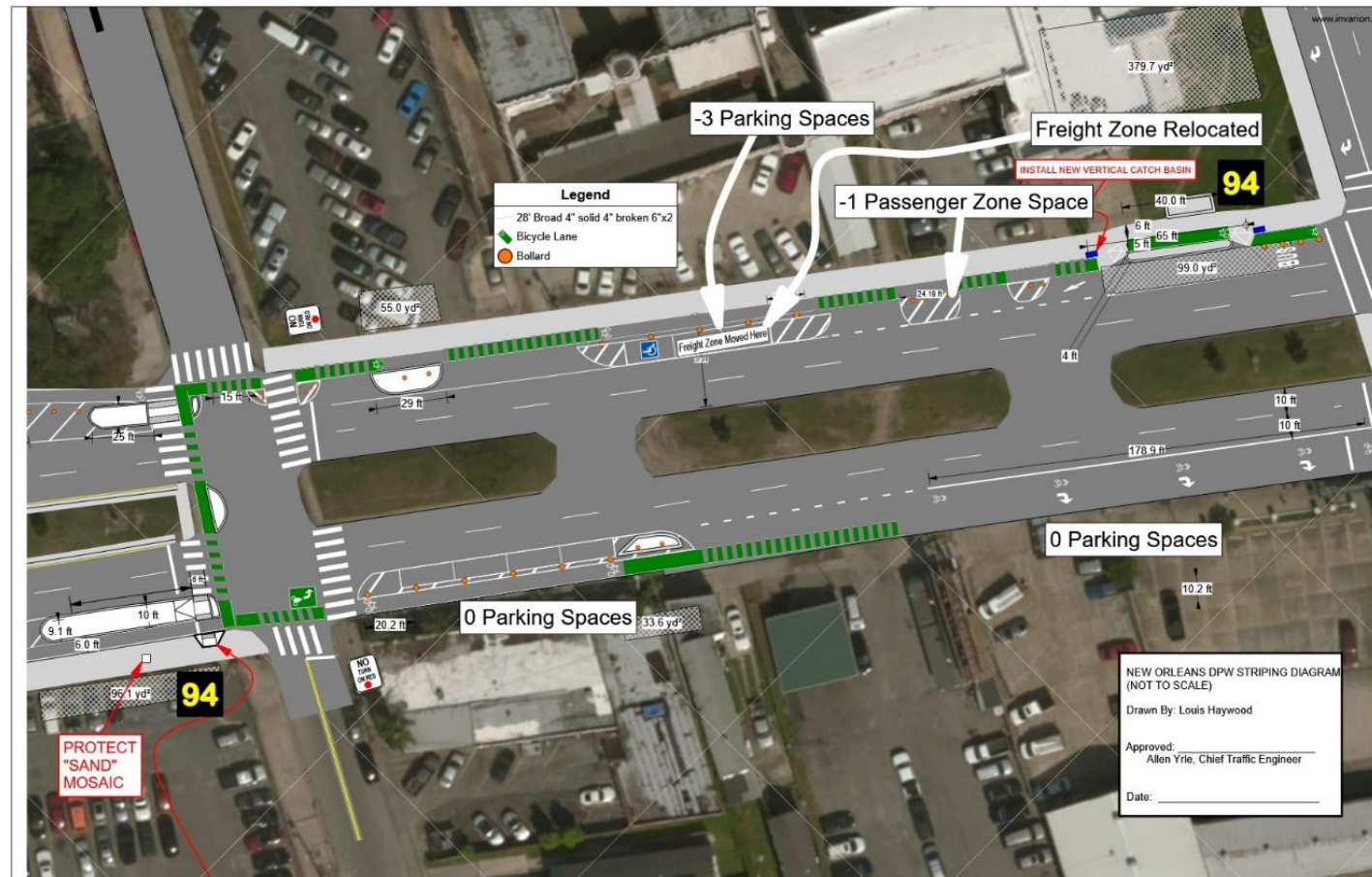
Gravier St.

New traffic signal now in place



Gravier St. – Tulane Ave.

New traffic signal now in place



What to Expect During Construction



Temporary construction impacts

- Additional construction equipment
- Limited parking availability
- Sounds
- Dust

Efforts to minimize construction impacts

- Construction signage placed around the sites.
- Any temporary closures will be communicated in advance.
- Any changes to garbage and US Postal services will be communicated in advance.
- Residents will be well informed throughout construction.

How to Stay Informed



- Sign up for monthly newsletter updates
- Visit roadwork.nola.gov
- Construction Hotline: 504.658.ROAD (7623)
- Construction E-mail: RoadWork@nola.gov



ROADWORK

CITY OF NEW ORLEANS

ROADWORK.NOLA.GOV



Facebook.com/roadworkNOLA



@roadworkNOLA



@roadworkNOLA



We have joined NextDoor!



504.658.ROAD (7623)



RoadWork@NOLA.gov



Monthly Newsletter Updates

